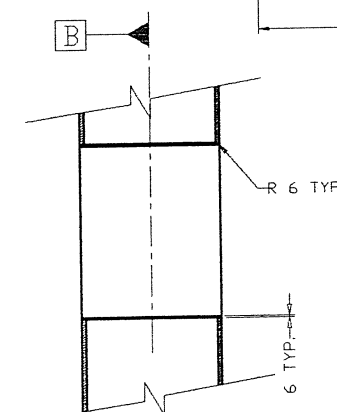
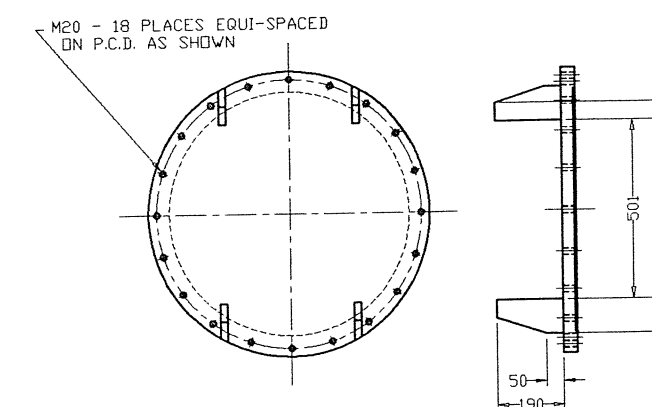


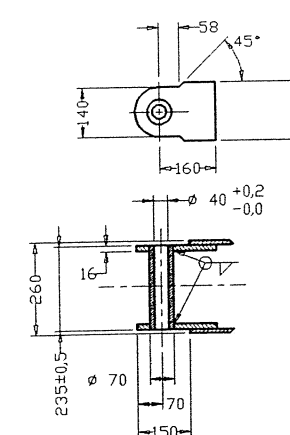
SECTION "A-A"



SECTION "B-B"



DETAIL "A"



DETAIL "B"

15	DRAWING STATUS	ACTIVE:	SIGN:	DATE:
	INFORMATION ONLY			
	FOR 3rd. PARTY APPROVAL			
	PERMIT MATERIAL ORDER			
	FOR MANUFACTURE			
	AS BUILT			
	SUPERSEDED			

NOTES: (UNLESS OTHERWISE STATED)		MATERIAL:	GENERAL TOLERANCES:
1) REMOVE ALL BURRS & SHARP EDGES TO .05x45° MAX.	4) ALL INTERNAL RADII .03 MAX.	12 THICK MILD STEEL PLATE	X .X X .X ANGLES ±1°
2) SCREW THREADS TO ISO 261	5) PRIME AND PAINT PLASCON CLATEX 8 ULTRA DURABLE		
3) SURFACE TEXTURE: $\sqrt{2}$	6) HIGH GLOSS POLYURETHANE FINISH, PL 17		

[illegible]